

YEAR 2

CLASSES 3 & 4

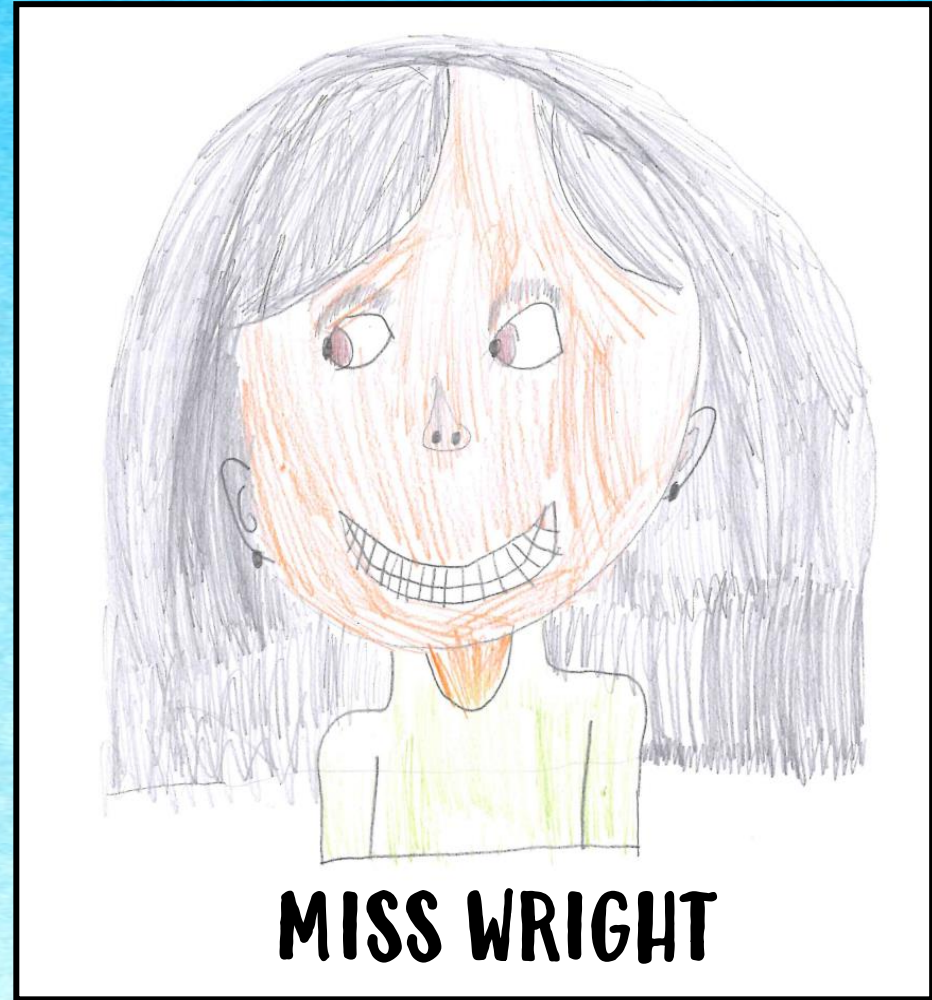




WHO ARE WE?



MISS PATEL



MISS WRIGHT



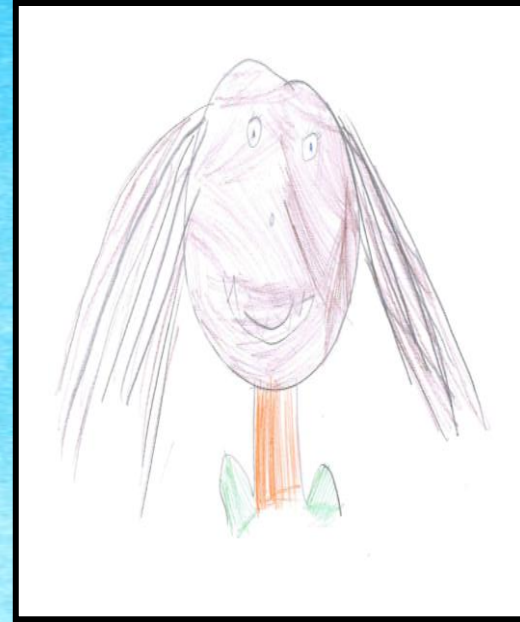
WHO ARE WE?



MRS FLORA
CLASS 3 AM



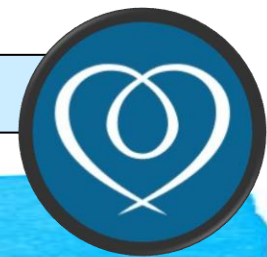
MRS ODEDRA
CLASS 3 PM



MRS MISTRY
CLASS 4 AM



MRS KAUR
CLASS 4 PM



THE CLASSROOMS





EVERYDAY ESSENTIALS

- School Day **8.50 – 3.15**
- Children need to have a water bottle.
- Correct school uniform clearly **labelled** with your child's name and class.
- Bookbags and **not backpacks**
- School shoes** not trainers
- Communication with teachers through the school office not at the classroom door.





PE



CLASS 3	MONDAY MORNING	THURSDAY AFTERNOON
CLASS 4	TUESDAY AFTERNOON	THURSDAY AFTERNOON



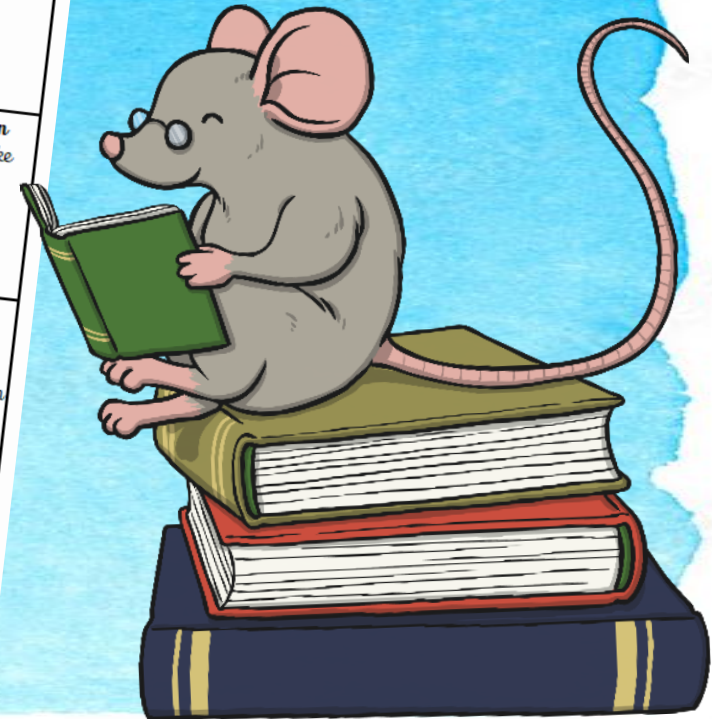
LIBRARY

CLASS 3	WEDNESDAY MORNING
CLASS 4	TUESDAY AFTERNOON

READING IN YEAR 2

- Children will receive new books every **Tuesday**.
- Children to return their books alongside reading journal on **Monday**.
- Please have books in school every day!

Fiction		Non-Fiction	Poetry
A) Retrieval Find words in the text that describe the characters. Can you think of other words that have the same meaning? E.g. sad = upset	B) Retrieval Find words in the text that describe the setting. Can you think of other words that have the same meaning? E.g. scary = frightening	I) Before Reading Can you think of three questions that you would like to find the answers to in the book?	M) Retrieval Can you find any words that rhyme?
C) Prediction Look at the title and the front cover, can you predict what might happen in this book? Why do you think that?	D) Before Reading Read the blurb. Does this make you want to read the book? Explain why.	J) Retrieval I have found three facts. They are...	N) Opinion I like/dislike this poem because...
E) After Reading Find your favourite part of the book. Why is it your favourite?	F) Opinion If I reviewed this book I would say...	K) Layout/ Structure Why are the pictures and diagrams useful in a non-fiction text?	P) Opinion From this book, my favourite poem is... Can you explain why?
G) Sequencing Can you explain what happens at the beginning, middle and end of the story?	H) Inferencing The main emotion/emotions in this book are... I know this because...	L) Vocabulary A new word I have learnt is...	P) Retrieval Can you find evidence of an action in your poem? E.g. running, sailing, flying.





ATTENDANCE

Term time holidays will be recorded as unauthorised, and fines may be issued.

EVERY SCHOOL DAY COUNTS

Attendance during the school year	Equates to days absent	Which is approximately
97%	6 Days	1 Week
94%	10 Days	2 Weeks
90%	19 Days	4 Weeks
85%	29 Days	6 Weeks
80%	38 Days	8 Weeks
75%	48 Days	10 Weeks
70%	57 Days	11.5 Weeks
65%	67 Days	13.5 Weeks



Please see new [attendance policy](#) on our website .



6RS



RESPECT	<ul style="list-style-type: none"> ✓ I work well with others and treat everybody respectfully. ✓ I am polite and helpful to everyone. ✓ I look after the environment and resources.
RESPONSIBILITY	<ul style="list-style-type: none"> ✓ I can take responsibility for my own learning and behaviour. ✓ I can keep myself safe and health. ✓ I can complete tasks to the best of my ability.
RESILIENCE	<ul style="list-style-type: none"> ✓ I like a challenge. ✓ I am not afraid of finding things hard. ✓ I minimise negative distractions. ✓ I stick at things despite difficulties.
RECIPROCITY	<ul style="list-style-type: none"> ✓ I can work on my own at times and I can work with at others. ✓ I can work as a team and respect and recognise other people's skills. ✓ I can listen and understand how other people might feel and what it would be like to experience that feeling. ✓ I can recognise good role models and learn from them.
RESOURCEFUL	<ul style="list-style-type: none"> ✓ I can be logical and systematic when working. ✓ I make use of a range of learning resources. ✓ I enjoy using my imagination.
REFLECTION	<ul style="list-style-type: none"> ✓ I know what I have done well and what I need to do to improve. ✓ I can transfer learning from one area to another. ✓ I can anticipate problems and ask enquiry questions. ✓ I can talk about how I learn.



CHARACTER STRENGTHS



RESPECT

- GRATITUDE** Being thankful, even for the little things.
- EMPATHY** Understanding people's feelings and desiring to help.
- LISTENING** Paying attention to what someone has to say and acting on it.
- TRUST** Relying on others and being reliable.

RESPONSIBILITY

- DECISIVENESS** The ability to make decisions quickly and effectively.
- ENTHUSIASM** Ready and keen to learn all there is to know, to contribute and enjoy.
- KIND/CARING** Taking care of yourself and others.
- OPEN MINDEDNESS** To compromise, try new things or to hear and consider new ideas.

RESOURCEFULNESS

- CREATIVITY/IMAGINATION** Thinking and thinking outside the box.
- CURIOSITY** Eager to learn something new, not afraid to ask questions.
- PROBLEM SOLVING** Creating or finding a solution to a problem.
- REASONING** Think, understand, and form ideas logically and be able to express them.
- UTILISING RESOURCES** Utilising available materials to their fullest potential.

RECIPROCITY

- COLLABORATION** Being an active member of a group that works together towards a goal.
- COMMUNICATION** Simply the act of transferring information from one place, person, or thing to another.
- ENCOURAGING** Giving others support and confidence that you believe in them.
- IMITATION** Using something or someone as a model to learn from.
- NEIGHBOURLINESS** Being a good citizen and appreciating your local community whilst trying to make it better.
- TEAM WORK** Working within a group and contributing individual skills.

RESILIENCE

- CONCENTRATION** The act of focussing your attention. The art of not being distracted.
- CONFIDENCE** Believing in yourself and your abilities. Not being shy of trying.
- COURAGE** To not be afraid to do the right thing, even if it is difficult.
- PERSEVERANCE** Carrying on through difficulties or setbacks.
- SELF-CONTROL** Managing distraction and choosing your own behaviour.

REFLECTION

- EVALUATION** Reviewing your efforts and achievements, both positive & negative.
- HONESTY** Being truthful about your performance and following rules.
- SELF-DIRECTION** Making your own decisions and being driven by your own goals.

RESILIENCE

- CONCENTRATION** The act of focussing your attention. The art of not being distracted.
- CONFIDENCE** Believing in yourself and your abilities. Not being shy of trying.
- COURAGE** To not be afraid to do the right thing, even if it is difficult.
- PERSEVERANCE** Carrying on through difficulties or setbacks.
- SELF-CONTROL** Managing distraction and choosing your own behaviour.



CHARACTER STRENGTHS







PARENT COMMUNICATION

- Two parent evenings:
October and February
- End of year written report
- Book looks
- Data snapshots end of each term
- Stay and parent sessions
- Whole school events
- Reading Logs



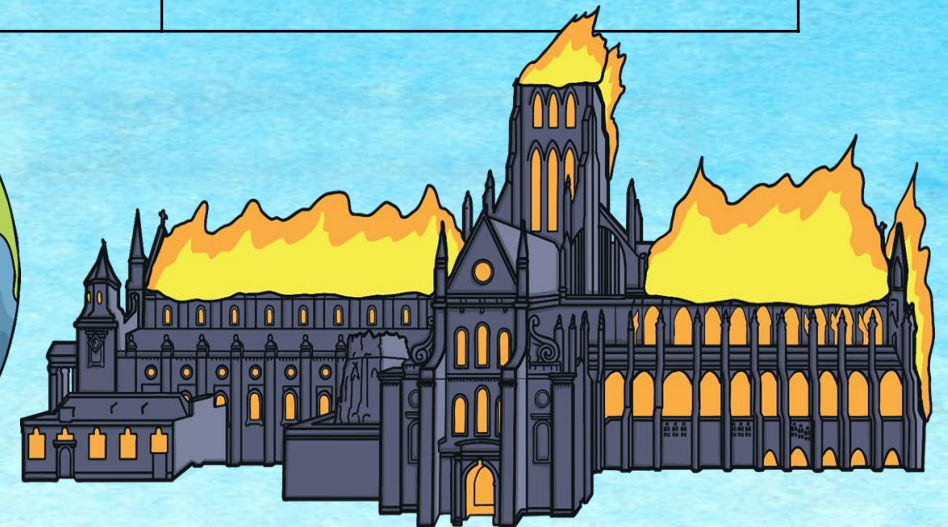
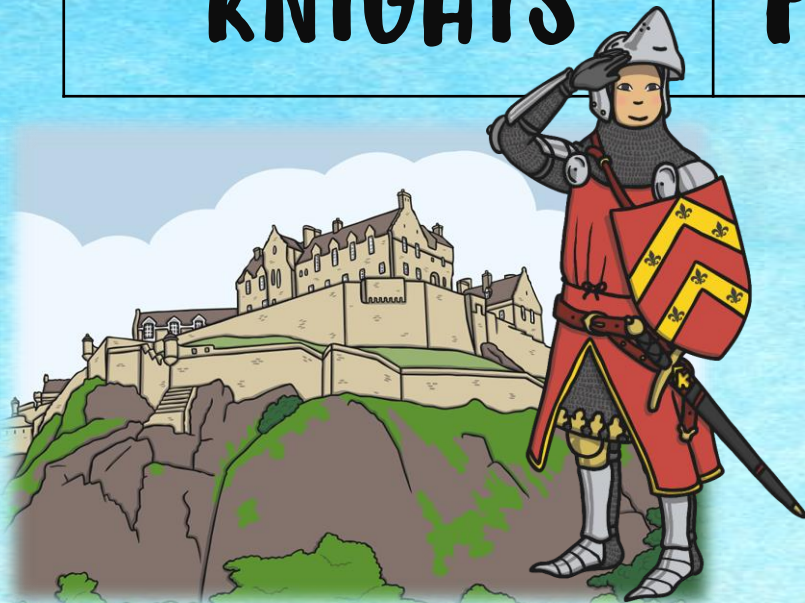


OUR TOPICS FOR THE YEAR

**CASTLES AND
KNIGHTS**

**PROTECTING
PLANET EARTH**

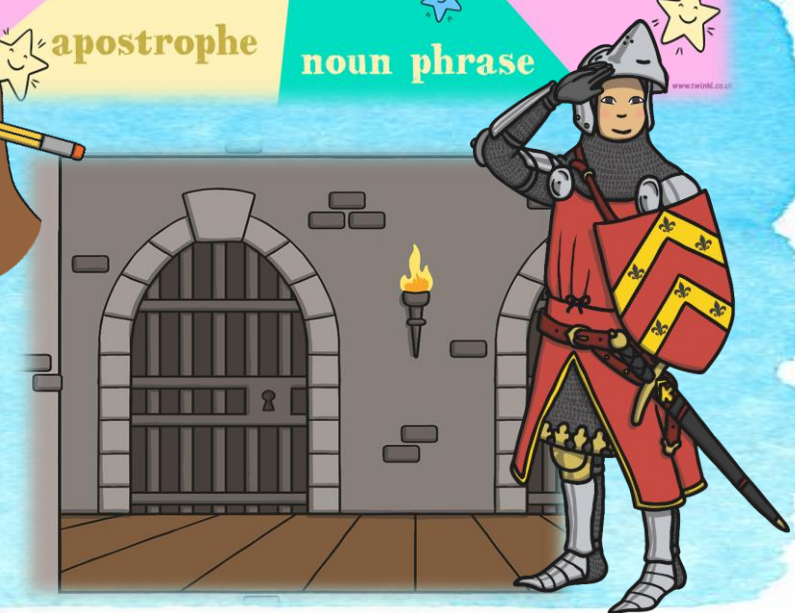
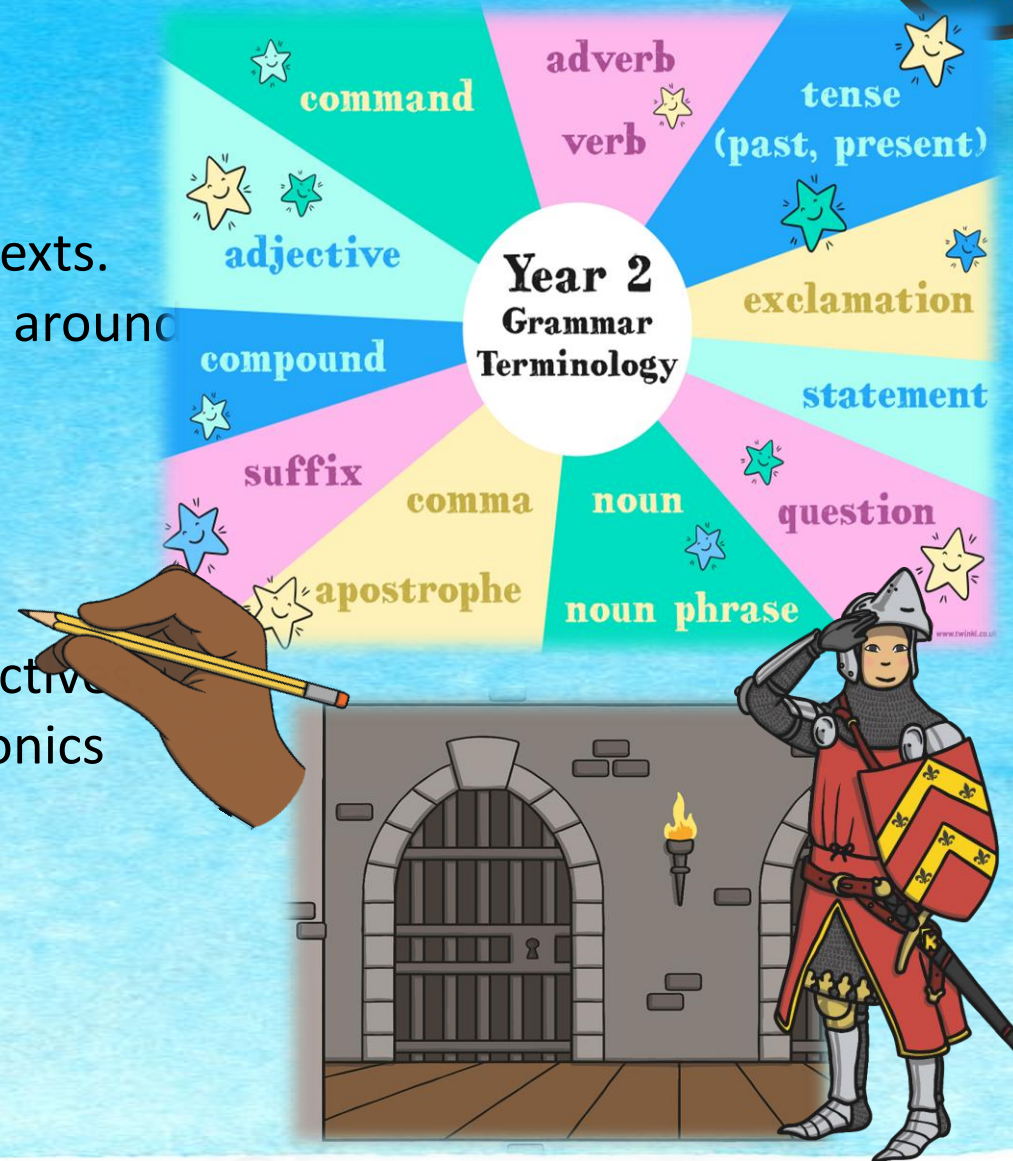
**GREAT FIRE
OF LONDON**

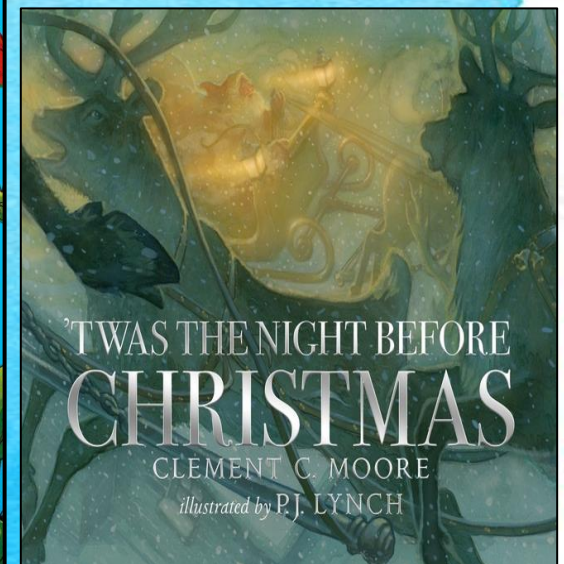
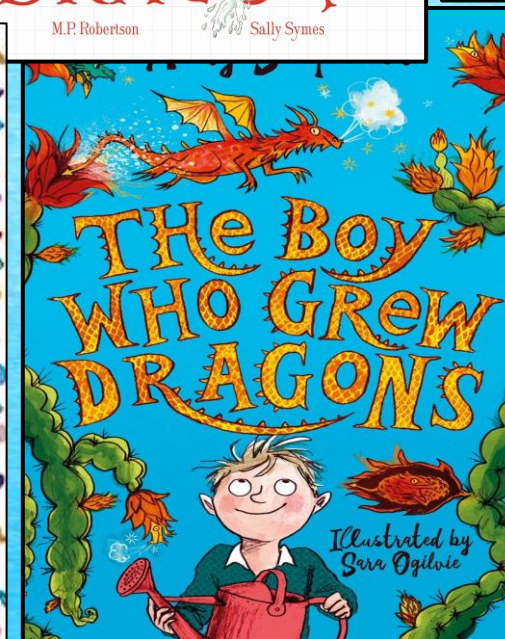
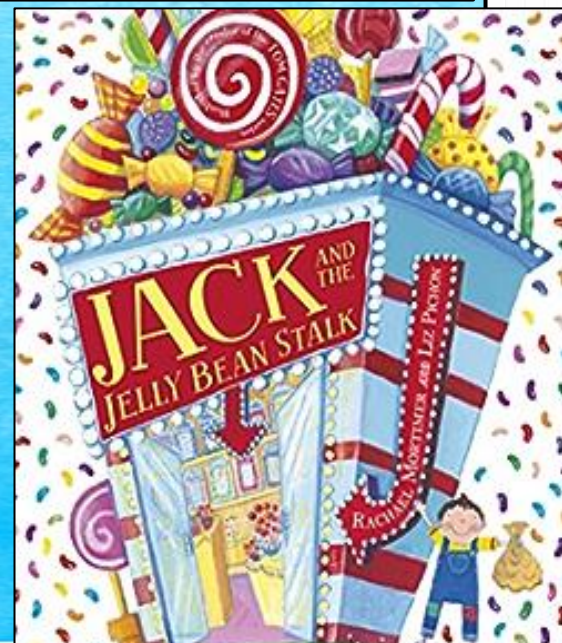
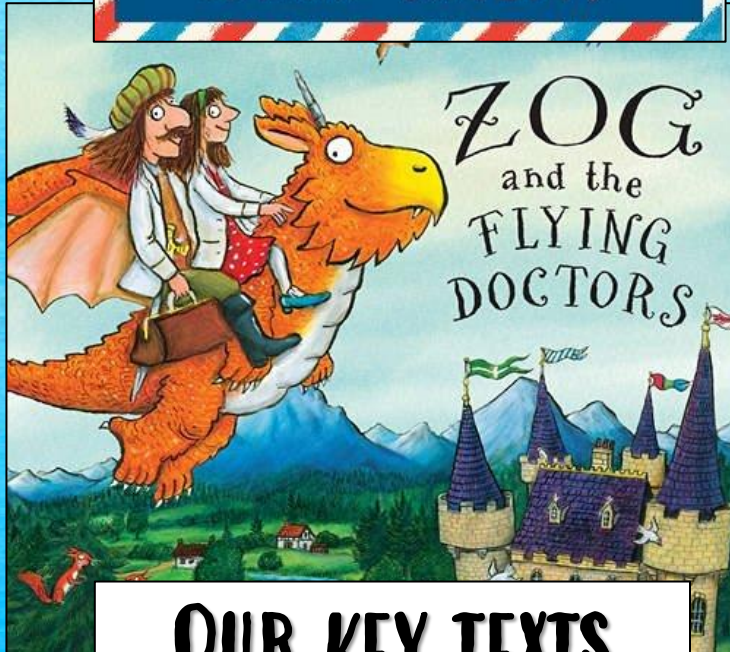
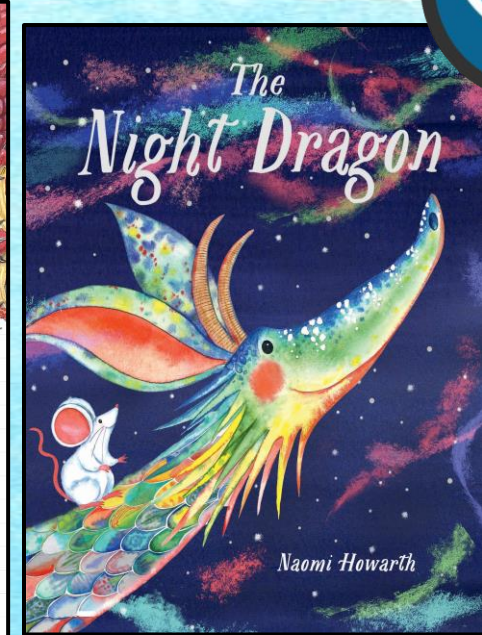
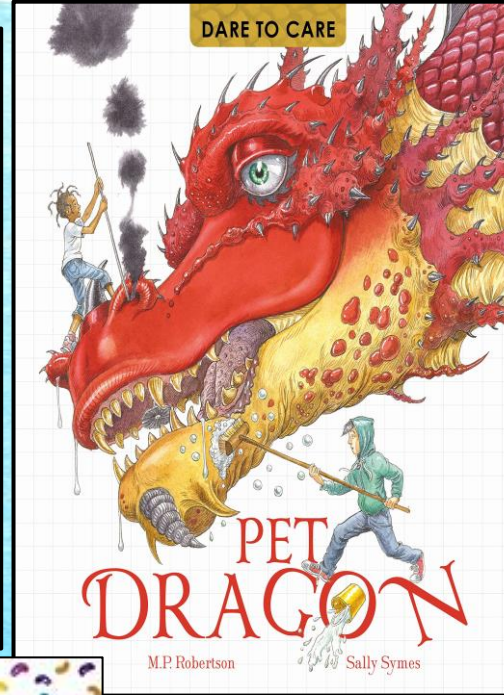
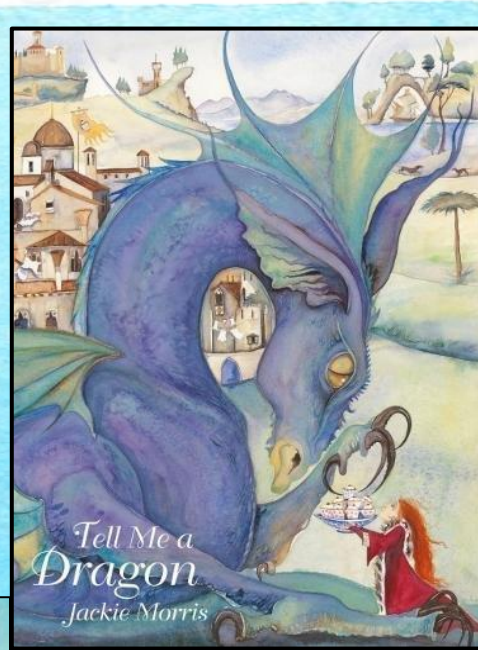
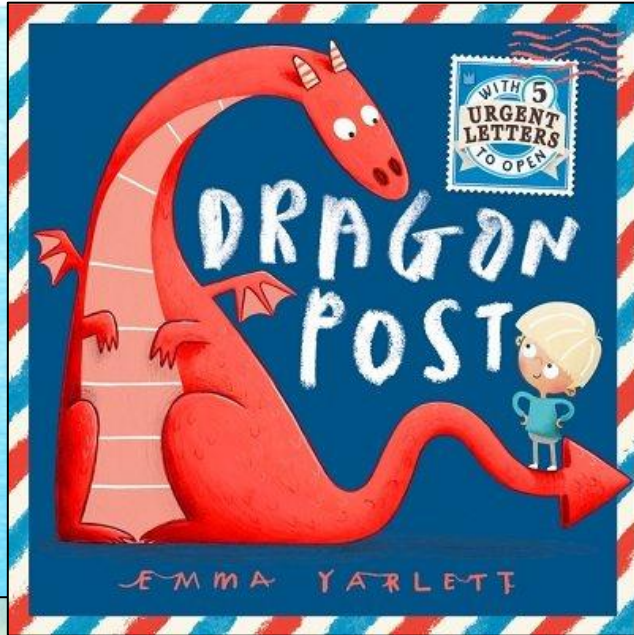




ENGLISH

- ❑ We will continue to teach through high-quality texts.
- ❑ Our independent writing will be based primarily around Castles, Knights and Dragons.
- ❑ We will write for different purposes to inform, entertain, persuade and discuss.
- ❑ Regular opportunities to read and be read to.
- ❑ Children will be taught the Year 2 grammar objectives.
- ❑ Teach the Year 2 spelling rules alongside the phonics.
- ❑ Continue to have a focus on handwriting and presentation of writing.





OUR KEY TEXTS



MATHS

At Brocks Hill we follow the White Rose Maths Scheme. During maths lessons in the Autumn term the children will start off by learning about **place value** within 100. They will look at partitioning numbers to 100, comparing numbers and counting in 3s for the first time. Children will look at number bonds to and within 20, adding and subtracting ten, as well as adding and subtracting with 2 digit numbers. In the Autumn term children will also explore shape and their properties.

	Week 1	Week 2	Week 3	Week 4	Week 5	Week 6	Week 7	Week 8	Week 9	Week 10	Week 11	Week 12
Autumn term	Number Place value VIEW				Number Addition and subtraction VIEW				Geometry Shape VIEW			



SCIENCE

USES OF EVERY DAY MATERIALS

This unit of work builds on the materials unit of work from Year 1. This term the children will identify and compare the uses of a variety of everyday materials, including wood, metal, plastic, glass, brick, rock, paper and cardboard for particular uses. As well as this, the children will find out how the shapes of solid objects made from some materials can be changed by squashing, bending, twisting and stretching.





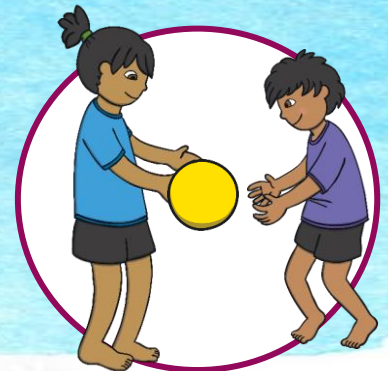
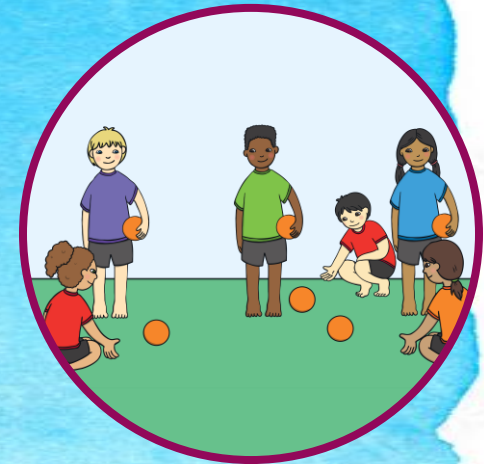
PE

In **'Attack, Defend and Shoot'** the children will learn how to develop eye to foot coordination. They will also participate in increasingly challenging games situations.

In **'Gymnastics'** the children will learn how to become increasingly competent and confident in fundamental agility, balance, and co-ordination (ABC) in relation to gymnastic activity. They will also develop and perform simple sequences.

In **'Dance'** children will become increasingly competent and confident in fundamental basic ABC in relation to dance activity. They will also develop and perform simple movement sequences.

In **'Hit, Catch and Run'** the children will start to develop eye to hand coordination for hitting. They will participate in striking and fielding game situations.





CHARACTER AWARD

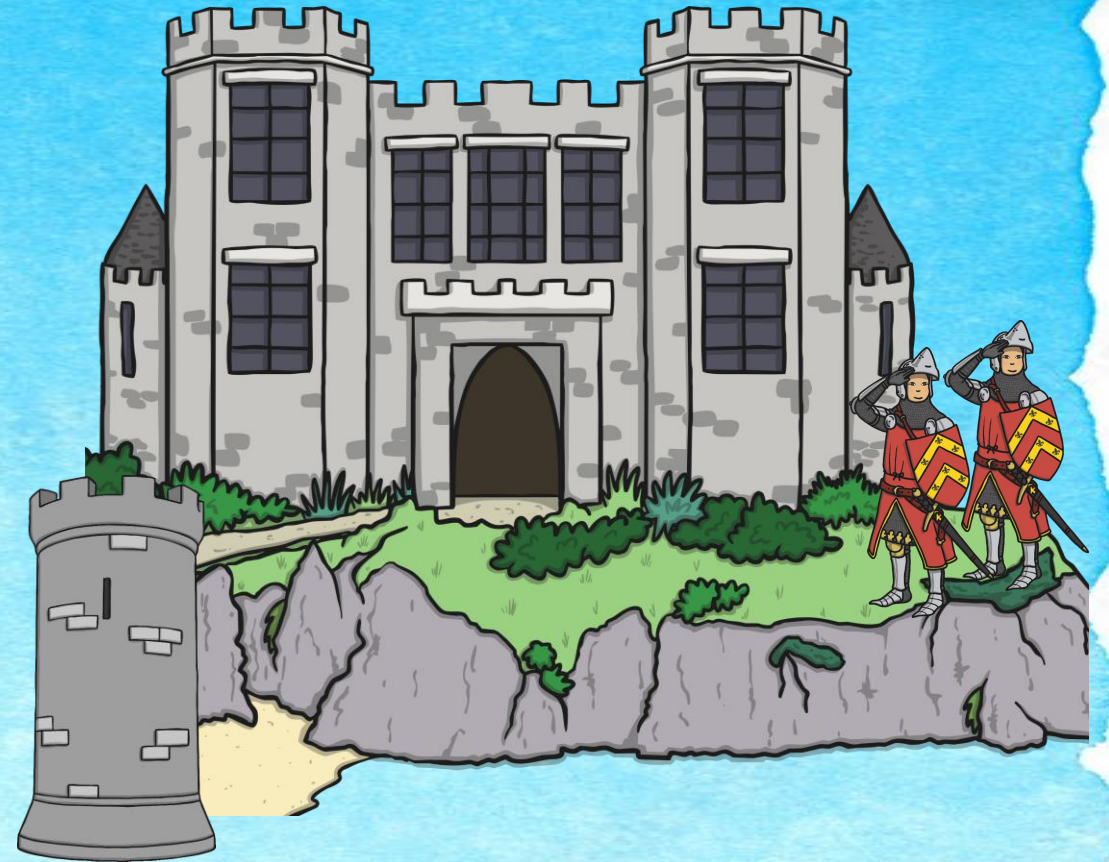




HISTORY

Our Topic in the Autumn Term is Castles and Knights and it is a history based topic. By the end of this topic most children will be able to remember features of a castle and their purpose. They will be able to use this knowledge to discuss the role of knights and soldiers and how they used to protect and attack a castle.

As part of our enrichment we will visit a castle.

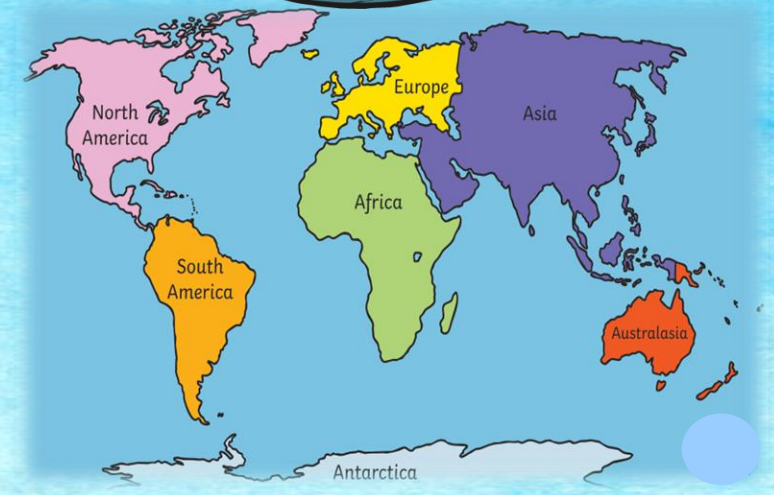




GEOGRAPHY

In Geography children will know that the Earth is spherical and that there is an imaginary line around the world called the equator which divides the North and South Hemispheres. They will be able to locate the poles and equator on a map. They will be able to name and locate the 7 continents and the 5 oceans and use points of a compass to describe the location of these.

Furthermore, the children will be able to identify **features** of planet Earth and explain what they like or dislike about a different place.





ART

The children will learn about the artist Heather Knight. Using her work and their own research they will create a dragon eye using clay. This will build on the clay techniques learnt in Year 1.

EXPLORE

DEVELOP

CREATE

EVALUATE

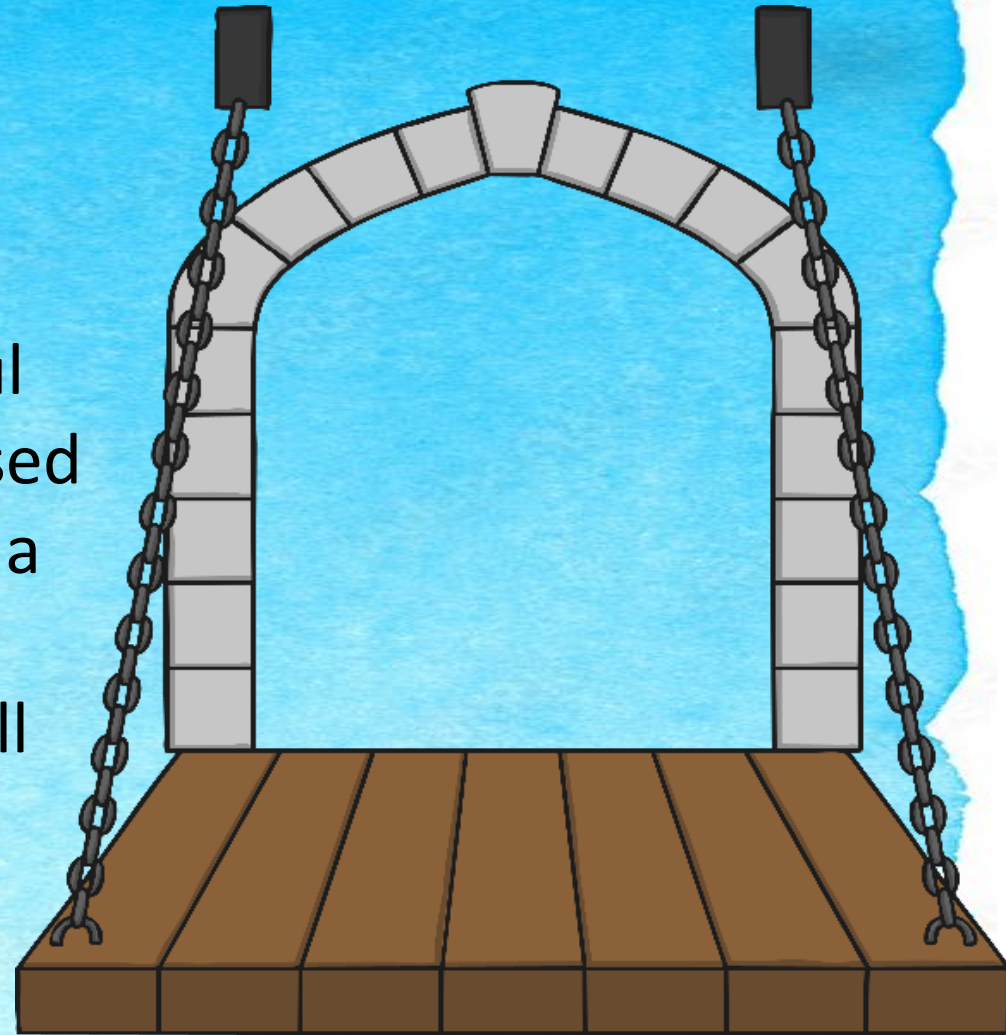




D&T

BUILD A DRAWBRIDGE

The children will design and made a successful wall and drawbridge applying the skills practised in their lessons. They will select from and use a range of tools and equipment to perform practical tasks. Through these lessons they will also explore and use mechanisms in their products.





PSHE

WHAT MAKES A GOOD FRIEND

The children will know how to be a good friend and how to self-regulate their own behaviours. They will know different ways to resolve conflict and know who to speak to if they are worried about friendships.



WHAT IS BULLYING?

The children will learn what acceptable behaviour looks like and that permission should be sought from others. They will also learn what is expected of their behaviour, what consequences are and where to go when they feel worried.





RE

In RE the children will learning about Islam. They will learn about who is a Muslim and how they live. They will recognise the words of the Shahadah and why it is important for Muslims. They will identify and know simple meanings of some of the key Muslim beliefs about God found in the Shahadah and the 99 names of Allah. They will also be able to give examples of how stories about the Prophet show what Muslims believe about Muhammad.





MUSIC

We are using a new scheme for 'Music' teaching through **Leicestershire Music**. In this unit, children will be looking at pulse and rhythm. They will continue developing their listening skills by recognising and marking the pulse in various pieces of music, including music which changes tempo.

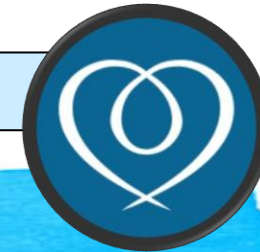




COMPUTING

In our first unit of computing learners will look at **information technology** at school and beyond, in settings such as shops, hospitals and libraries. Learners will investigate how information technology improves our world, and they will learn about using technology responsibly. Later on in the term the children will learn about '**Digital Photography**'. They will learn to recognise that different devices can be used to capture photographs and will gain experience capturing, editing, and improving photos. Finally, they will use this knowledge to recognise that images they see may not be real.





LEARNING MODE & PERFORMANCE MODE

We can try new things.
We can make mistakes and it's ok.
Learning from mistakes.
We don't have to worry about getting things wrong.
No one will make us feel embarrassed.
We want to get advice and help from our friends and our teachers.
We use a Growth Mindset
We use Resilience, Resourcefulness, Reciprocity and Reflection



We really focus & concentrate.
We block out all distractions.
We get as much correct as we possibly can.
We try not to make mistakes.
We remember all the things we have learned.
We use our learning to help us with our answers.
We use the 6Rs



HOLISTIC CURRICULUM

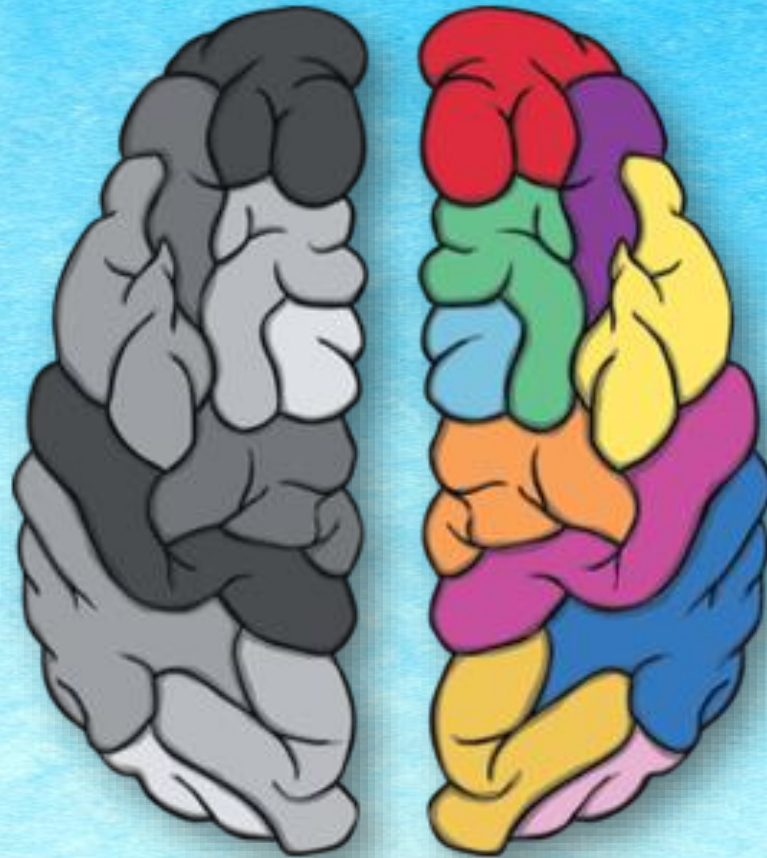
- Weekly PSHE lessons
- Weekly Religious Education lessons
- PE twice a week at least
- Character Education
- Daily Boost
- Mindful Activities
- Well-being ambassadors and Play leaders
- UNICEF Rights respecting school
- School Games Platinum School
- A range of after school clubs



Please keep us informed if your child's life circumstances change so that we can support them.



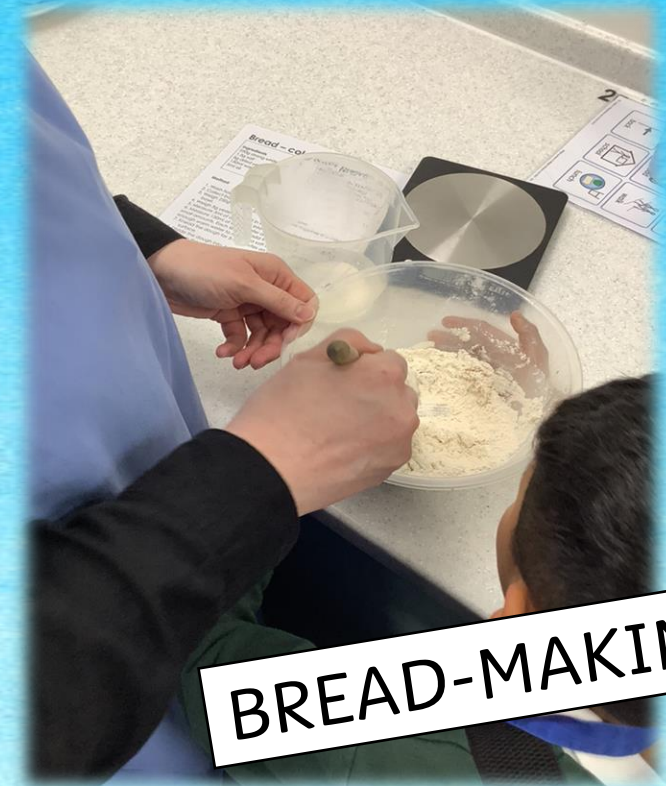
LINKING EVERYTHING TOGETHER





ENRICHMENT & TRIPS

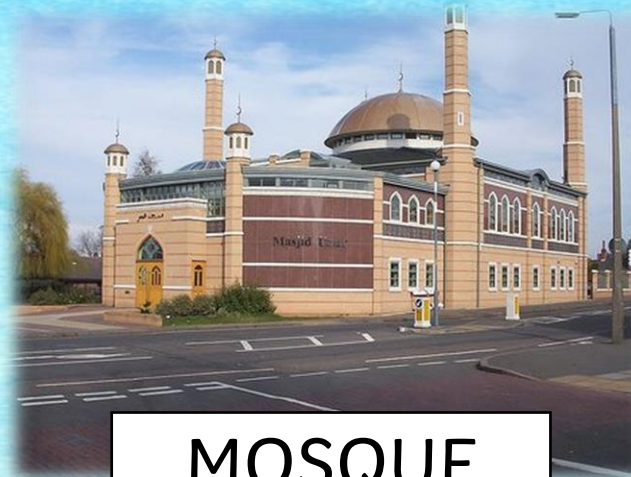
CONCERT



BREAD-MAKING



CASTLE



MOSQUE



HOME LEARNING

OUR EXPECTATIONS

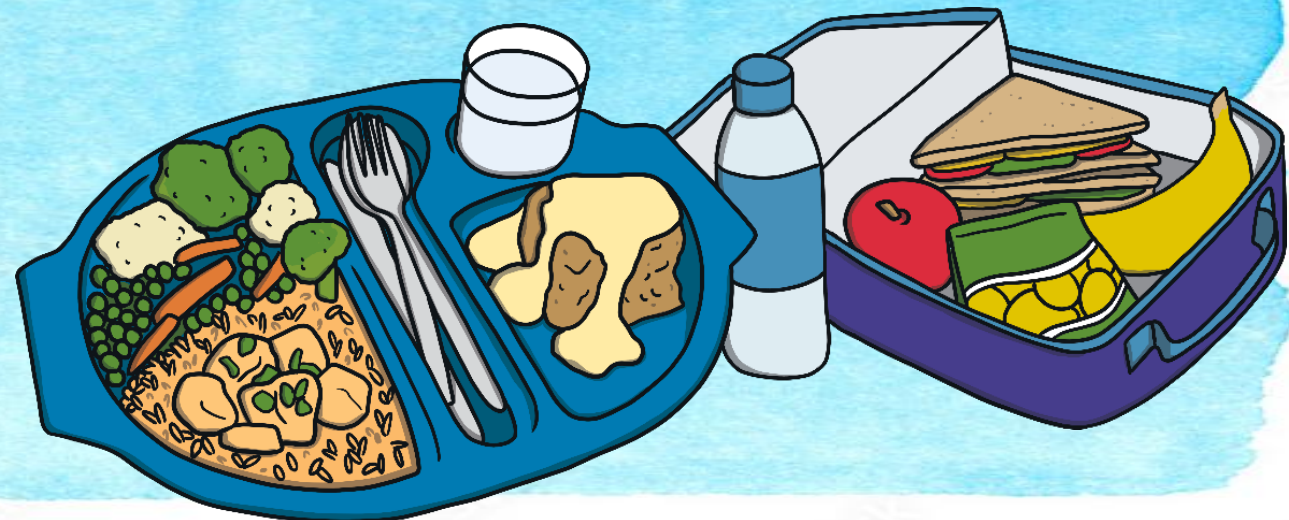
- Reading – particularly reading for pleasure, sharing books, reading together. Has the single biggest impact on educational achievement.
- 201 things to do before you leave Primary School – a choice of enrichment ideas and activities for the family to do together. A booklet of these ideas will be sent home. Promotes wider learning, enrichment and positive mental health.
- Practising phonics sounds from the reading diary and completing the reading grid.
- Teachers may also direct pupils to additional work to support their work in class if this is felt necessary.
- Talk to your child about what they are learning in school.
- Encourage them to develop their own interests.
- Playing board games that involve counting.
- Encourage them to be physically active.
- Reinforce the 6Rs and encourage those effective characteristics for learning.





LUNCHTIMES

- ❑ Children in KS1 are entitled to universal free school meals
- ❑ Children may bring a healthy packed lunch if they prefer.
- ❑ If a child forgets their packed lunch please bring it to the office before 10am.
- ❑ We do not allow children to bring nuts or products containing nuts to school. This includes chocolate spread. **WE ARE A NUT FREE SCHOOL.**





OTHER REMINDERS

- All children entitled to free eye tests.
- Pupil Premium- are you entitled?
- Contact details: Please ensure your details are up to date, let the office know of any changes. Please fill in the form of who is authorised to collect your child. If it is someone different / won't be you – inform the office.
- Can be very busy outside Year 2 Classrooms, especially Class 4. Please be mindful of other parents trying to get past.
- Please refrain from going on the hill, trim-trail, spider and tyres in the morning. No football please.

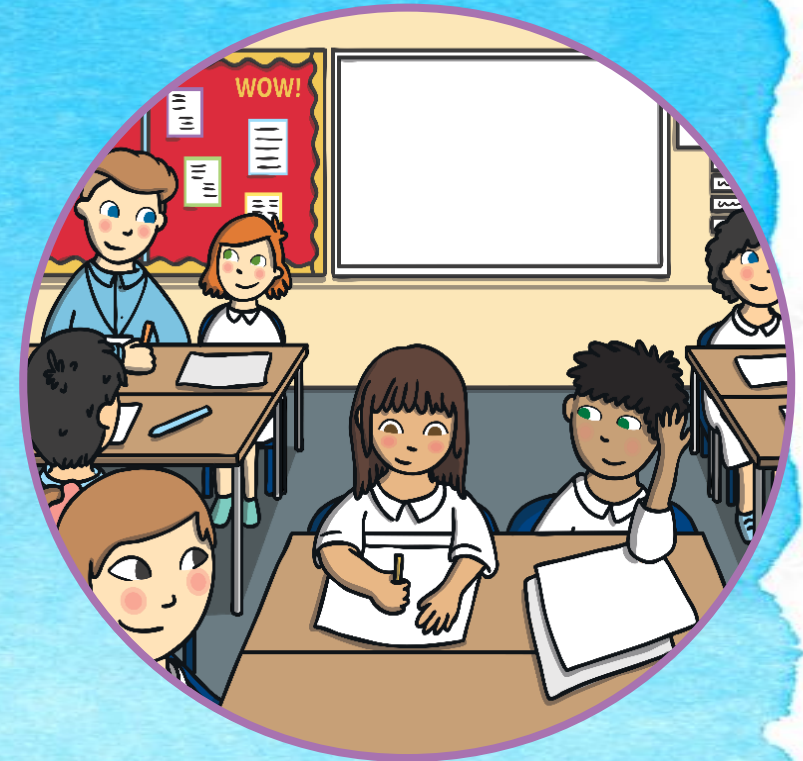
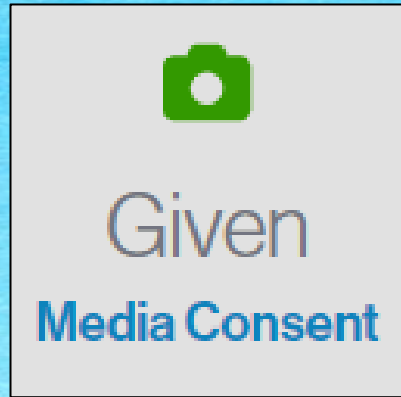




PHOTO PERMISSION

Please update
PHOTO
permission on
BEE-hive.



We like to post
regularly on
TWITTER.



 **Brocks Hill Primary School** @BrocksHill · 6d
Key Stage 1 have LOVED Culture Day! It was lovely to hear the children sharing their experiences, views and discussing all the different faiths in our school. We think the children look FANTASTIC! @LHTrustLeics 🙌👏




🗨️ 4 ❤️ 27 📊 780 📌 ⬆️

 **Brocks Hill Primary School** · 19/05/2024
This term Year 1 have been learning about plants. Earlier in the term, they planted beans and have been observing and taking care of their plants for the last few weeks.

We cannot believe how tall they have grown. Some reaching over a metre- WOW!
@LHTrustLeics 🌱🌱



🗨️ 2 ❤️ 15 📊 503 📌 ⬆️

 **Brocks Hill Primary School** · 14/02/2024
🌍 Climate Change Heroes 🌍

This week, within our geography lesson, Year 2 LOVED becoming news reporters and discussing 'Climate Change'.

AMAZING to see how much knowledge the children have gained and remembered! 🌍🗣️
@WWF @BBCNews @LHTrustLeics
#protectingplanetearth



🗨️ 4 ❤️ 28 📊 798 📌 ⬆️



CONTACT US

- If your child is ill please contact school office.
- If you need to speak to your child's teacher please arrange a meeting with them through the school office.
- If you have a concern we ask that you always first speak to your child's teacher. We know this normally resolves the situation quickly and smoothly.
- Messages regarding appointments, collections and medicines must be given at the office. They will then be passed onto the teaching staff.
- For longer discussions, please arrange a time for after school at the office.





**THANK YOU
ANY QUESTIONS**

