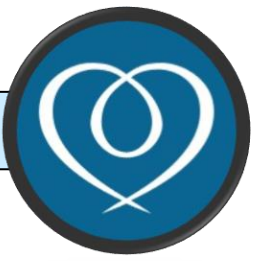


YEAR 6

AUTUMN TERM

2024



YEAR 6

CLASSES 11 & 12



WHO ARE WE?



**MR
ORTON**



**MRS
STREET**



MISS KOTHARI



OUR SCHOOL RULES

- BE READY
- BE RESPECTFUL
- BE SAFE





6Rs

Respect	<ul style="list-style-type: none"> • I work well with others and treat everybody respectfully • I am polite and helpful to everyone • I look after the environment and resources
Responsibility	<ul style="list-style-type: none"> • I can take responsibility for my own learning and behaviour • I can keep myself safe and health • I can complete tasks to the best of my ability
Resilience	<ul style="list-style-type: none"> • I like a challenge • I am not afraid of finding things hard • I minimise negative distractions • I stick at things despite difficulties
Reciprocity	<ul style="list-style-type: none"> • I can work on my own at times and I can work with at others. • I can work as a team and respect and recognise other people's skills. • I can listen and understand how other people might feel and what it would be like to experience that feeling. • I can recognise good role models and learn from them
Resourceful	<ul style="list-style-type: none"> • I can be logical and systematic when working • I make use of a range of learning resources • I enjoy using my imagination
Reflection	<ul style="list-style-type: none"> • I know what I have done well and what I need to do to improve • I can transfer learning from one area to another • I can anticipate problems and ask enquiry questions • I can talk about how I learn
















EVERYDAY ESSENTIALS

- Reading books everyday
- Named water bottle
- Please make sure you children wear full uniform unless it's a PE day.
- Bookbags and **not backpacks**
- Please ensure children are wearing PE kit on PE days.
- The classes visit the Library on Thursday.
- School Day **8.50 – 3.20**





ATTENDANCE

 <p>HIGH ATTENDANCE AT SCHOOL GETS YOUR CHILD'S LIFE OFF TO A <i>FLYING START!</i></p>	 <p>INCREASING ATTENDANCE BY JUST 5% CAN DOUBLE THE CHANCES OF GAINING GOOD QUALIFICATIONS</p>	 <p>MISSING TWO DAYS A MONTH MEANS A CHILD MISSES 10% OF THE SCHOOL YEAR</p>	<p>GOOD ATTENDANCE IN PRIMARY SCHOOL</p>  <p><i>Writing</i> + MATHS SKILLS</p>
 <p>THERE ARE 175 DAYS A YEAR NOT SPENT IN SCHOOL</p> <p>PLENTY OF TIME FOR SHOPPING, HOLIDAYS AND APPOINTMENTS!</p>	 <p>100s 1000s OF SUBJECTS OF CLASSES</p> <p>ENDLESS POSSIBILITIES</p>	 <p>TURNING UP JUST 5 MINUTES LATE EVERY DAY ADDS UP TO OVER 3 DAYS LOST IN THE YEAR!</p>	<p>MORE SCHOOL =</p> <ul style="list-style-type: none">  HIGHER GRADES  INCREASED CONFIDENCE  MORE FRIENDS  BRIGHTER FUTURE

EVERY DAY



COUNTS!



ATTENDANCE

Every School Day Counts		
Attendance during the school year	Equates to days absent	Which is approximately
97%	6 days	1 week
94%	10 days	2 weeks
90%	19 days	4 weeks
85%	29 days	6 weeks
80%	38 days	8 weeks
75%	48 days	10 weeks
70%	57 days	11.5 weeks
65%	67 days	13.5 weeks



OUR TOPIC: WAR AND PEACE





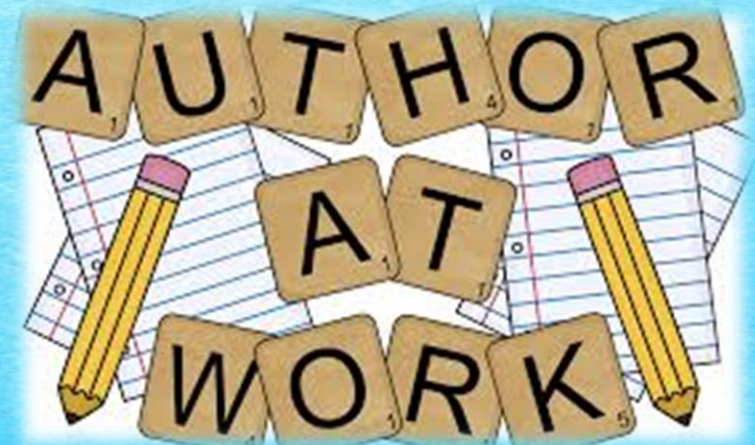
ENGLISH

Reading and writing

Our English work during autumn will complement our topic on WW1 and WW2; we will use a range of fiction and non-fiction texts to support our teaching of reading and writing, as well as grammar and spelling. We develop our oracy skills through classroom-based talk, presentation, discussion and debate.

Grammar and spelling

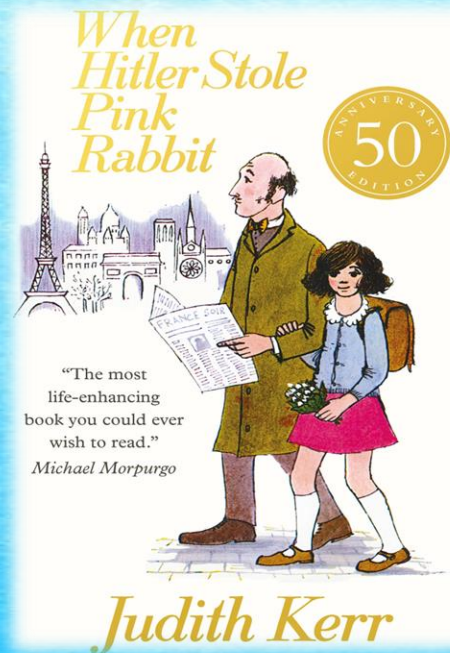
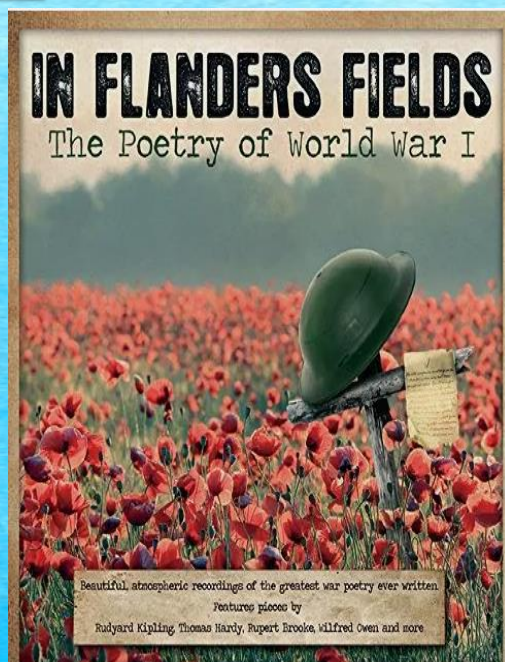
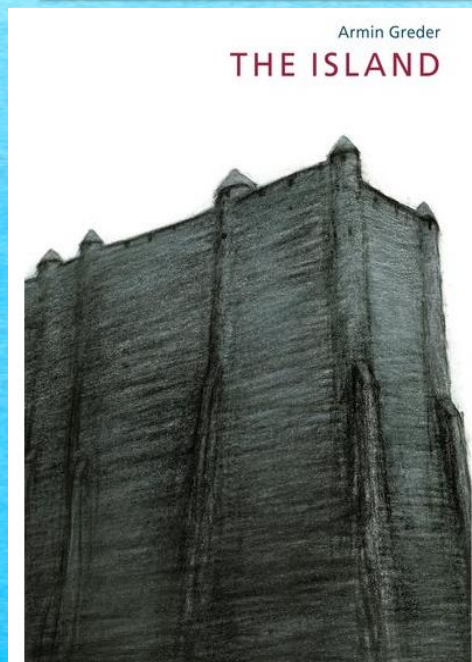
Grammar learning this term will include: the passive voice, cohesive devices; sentence construction; semi-colons and colons; bullet points, hyphens, determiners and parenthesis.





ENGLISH

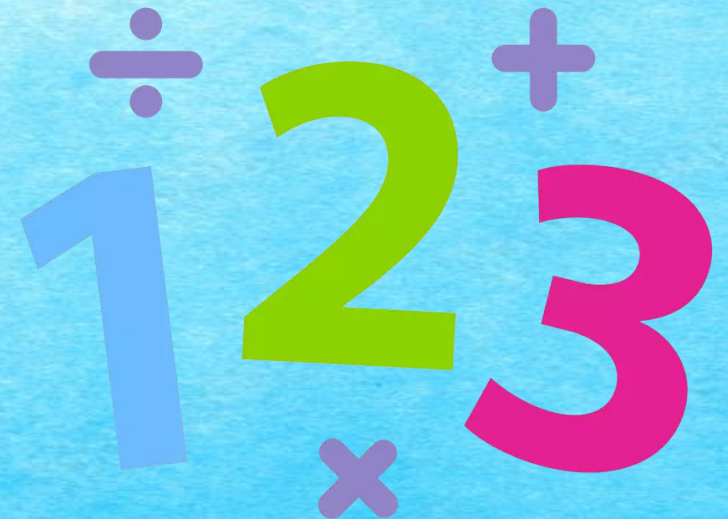
OUR KEY TEXTS





MATHS

The children will be learning and consolidation their place value knowledge with numbers up to 10,000,000. They will also learn to become fluent and efficient in all four operations (+ - x ÷). This includes mental methods and formal written methods (long multiplication, long division etc) The children will learn to compare and order fractions. They will convert mixed numbers into improper fractions and vice versa. They will also use all four operations with fractions. The children will learn how to convert metric measures and imperial units.

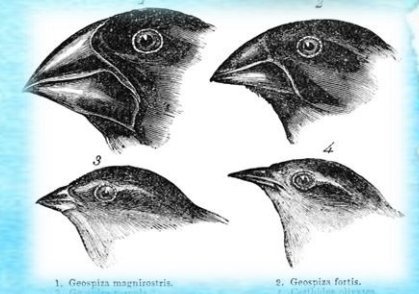




SCIENCE

Evolution and Inheritance

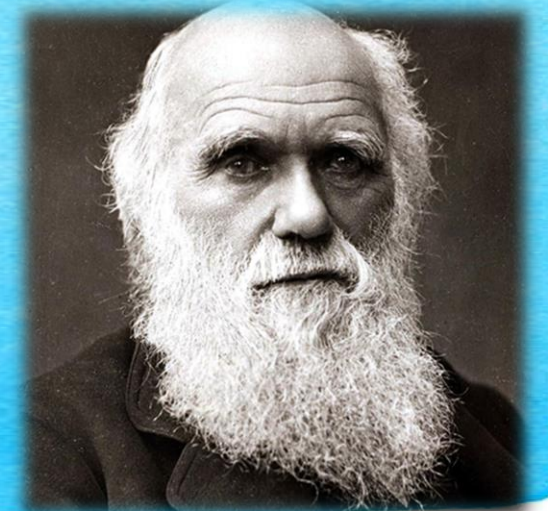
The children will explain that variation are differences between individuals of the same species and can be caused by genetic differences, the environment, or both They will learn that adaptations are special features organisms have for survival and that competition between species results in the survival of the best adapted (survival of the fittest) and this can lead to evolution



Living Things and Their Habitats

The children will use a sorting key to classify similar species from each group by their characteristics. Create a simple sorting key to classify different species of animals, plants and micro-organisms

Know the 5 main kingdoms and examples of their characteristics





PE



PE Days:

**Class 11:
Wednesday & Friday**

**Class 12:
Wednesday & Friday**



HISTORY

By the end of this unit, most children will be able to identify the main countries, world leaders and events of and leading up to World War 1 and II. They will understand and explain the importance of the evacuation scheme, children will understand the implementation of rationing and explain the purpose and effect of the Dig for Victory campaign. In analysing the impact of the war, most children will be able to describe the importance of the role of women, and the livelihood of refugees. Most children will be able to identify the impacts on people and cities in the UK, as a result of the Blitz and the Battle of Britain The children will understand segregation by making links to the Holocaust and identify Anne Frank as a historical figure.





GEOGRAPHY

What is life like in Brazil?

By the end of this unit children will be able to locate South America and where the continents are in. (**knowledge and location**)

Pupils will know how latitude affects the geography, climate and economy of Brazil. (**Trade, sustainability, fieldwork**)

Pupils will know the significance of the Amazon Rainforest and the lives of indigenous people. (**interconnection, sustainability, change, environment**)





ART

During this term, children will use recycled, natural and man-made materials to create a sculpture of a person inspired by the work of Henry Moore. They will create the sculpture with increasing levels of independence.



EXPLORE

DEVELOP

CREATE

EVALUATE



PSHE

How can we keep healthy as we grow?

We focus on the importance of physical and mental health and who to talk to when we feel worried. We explore what makes a positive friendship and know how our actions and choices affect the wellbeing of other people.

We develop our understanding of drugs and alcohol on our bodies, and how medicines and vaccines help protect us.





RE

In RE we will be looking at creation in science and whether it is complimentary or contradictory to religious beliefs. We will look at the universe and compare the scientific view of evolution with Christian belief.

We will explore why some people believe in God and others do not. We investigate what humanists and atheists believe about the world.

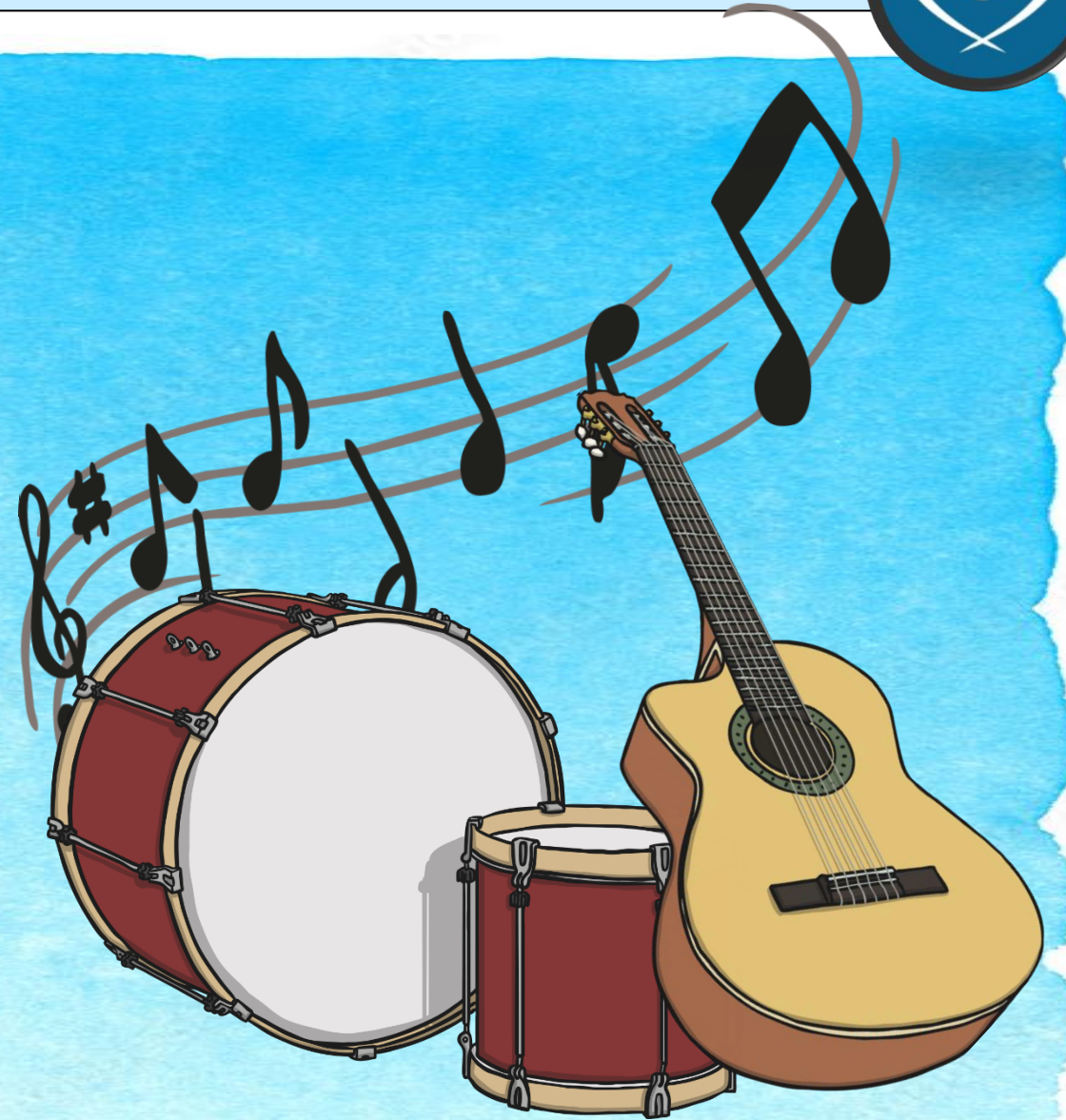




MUSIC

Pulse

Children will be listen to a variety of music that includes a range of time signatures. They will hear, explore and create their own ostinatos using a variety of timbres of body percussion and voice. Children will also create a piece of music built around several composed ostinato patterns.





COMPUTING

Computing Systems and networks: Internet communication

The children will learn how the WWW can be used to communicate and be searched to find information. They will know how:

- Search engines are needed for internet searches.
- Search engines use web crawlers.
- Search results are ranked using criteria.

Creating Media: Webpage creation

Designing and creating webpages, giving consideration to copyright, aesthetics, and navigation .They will know how:

- Websites are created using HTML code.
- Different media can be used in the layout of a web page.
- Copyright-free images can be used in public web pages.
- Hyperlinks create links to other websites.



COMPUTING

Computing Systems and networks: Internet communication

The children will learn how the WWW can be used to communicate and be searched to find information. They will know how:

- Search engines are needed for internet searches.
- Search engines use web crawlers.
- Search results are ranked using criteria.

Creating Media: Webpage creation

Designing and creating webpages, giving consideration to copyright, aesthetics, and navigation. They will know how:

- Websites are created using HTML code.
- Different media can be used in the layout of a web page.
- Copyright-free images can be used in public web pages.
- Hyperlinks create links to other websites.

ENGLISH

Reading and writing

Our English work during autumn will complement our topic on WW1 and WW2; we will use a range of fiction and non-fiction texts to support our teaching of reading and writing, as well as grammar and spelling. We develop our oracy skills through classroom-based talk, presentation, discussion and debate.

Grammar and spelling

Grammar learning this term will include: the passive voice, cohesive devices; sentence construction; semi-colons and colons; bullet points, hyphens, determiners and parenthesis.

SCIENCE

Evolution and Inheritance

The children will explain that variation are differences between individuals of the same species and can be caused by genetic differences, the environment, or both. They will learn that adaptations are special features organisms have for survival and that competition between species results in the survival of the best adapted (survival of the fittest) and this can lead to evolution.

Living Things and their habitats

The children will use a sorting key to classify similar species from each group by their characteristics. Create a simple sorting key to classify different species of animals, plants and micro-organisms. Know the 5 main kingdoms and examples of their characteristics.



Brocks Hill Primary School



YEAR 6 AUTUMN TERM

MUSIC

Pulse

Children will listen to a variety of music that includes a range of time signatures. They will hear, explore and create their own ostinatos using a variety of timbres of body percussion and voice. Children will also create a piece of music built around several composed ostinato patterns.

MATHS

The children will be learning and consolidation their place value knowledge with numbers up to 10,000,000. They will also learn to become fluent and efficient in all four operations (+ - x ÷). This includes mental methods and formal written methods (long multiplication, long division etc). The children will learn to compare and order fractions. They will convert mixed numbers into improper fractions and vice versa. They will also use all four operations with fractions. The children will learn how to convert metric measures and imperial units.

DT

Children will be able to make a strong structure that resembles an Anderson shelter. Children will have used a range of tool and materials. Children should be able to choose the materials themselves.

PSHE

How can we keep healthy as we grow?

We focus on the importance of physical and mental health and who to talk to when we feel worried. We explore what makes a positive friendship and know how our actions and choices affect the wellbeing of other people.

We develop our understanding of drugs and alcohol on our bodies, and how medicines and vaccines help protect us.

ART

During this term, children will use recycled, natural and man-made materials to create a sculpture of a person inspired by the work of Henry Moore. They will create the sculpture with increasing levels of independence.

Geography

What is life like in Brazil?

Children will be able to locate South America and where the continents are in. Pupils will know how latitude affects the geography, climate and economy of Brazil. Pupils will know the significance of the Amazon Rainforest and the lives of indigenous people.

PE

Football

Gymnastics

History

By the end of this unit, most children will be able to identify the main countries, world leaders and events of and leading up to World War 1 and II. They will understand and explain the importance of the evacuation scheme, children will understand the implementation of rationing and explain the purpose and effect of the Dig for Victory campaign. In analysing the impact of the war, most children will be able to describe the importance of the role of women, and the livelihood of refugees. Most children will be able to identify the impacts on people and cities in the UK as a result of the Blitz and the Battle of Britain. The children will understand segregation by making links to the Holocaust and identify Anne Frank as a historical figure.

RE

In RE we will be looking at creation in science and whether it is complimentary or contradictory to religious beliefs. We will look at the universe and compare the scientific view of evolution with Christian belief.

We will explore why some people believe in God and others do not. We investigate what humanists and atheists believe about the world.

EXAMPLE TIMETABLE

Monday	Tuesday	Wednesday	Thursday	Friday
Thinking Task	Thinking Task	Thinking Task	Thinking Task	Thinking Task
English	English	English	English	English
Assembly	Assembly	Assembly	Assembly	Assembly
Break Time				
Maths	Maths	Maths	Maths	Maths
Lunch Time				
Class 12: RE & PSHE (DO) Class 11: Science or History	Class 11: RE & PSHE (DO) Class 12: Science or History	French (Mrs Brown) PE 1	Art (Mr Farrin) Music (Mrs Cherry)	Computing PE 2

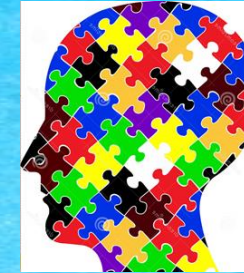


LEARNING MODE



We can try new things.
We can make mistakes and it's ok.
Learning from mistakes.
We don't have to worry about getting things wrong.
No one will make us feel embarrassed.
We want to get advice and help from our friends and our teachers.
We use a Growth Mindset
We use Resilience, Resourcefulness, Reciprocity and Reflection

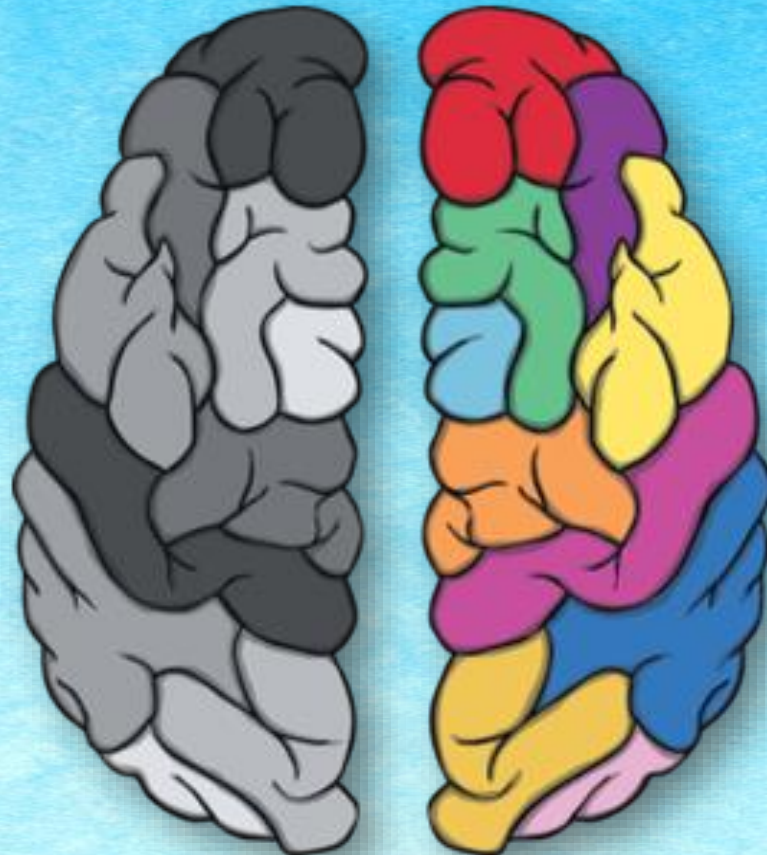
PERFORMANCE MODE



We really focus & concentrate.
We block out all distractions.
We get as much correct as we possibly can.
We try not to make mistakes.
We remember all the things we have learned.
We use our learning to help us with our answers.
We use the 6Rs



LINKING EVERYTHING TOGETHER





HOLISTIC CURRICULUM

- Regular PHSE and RE lessons
- Regular teaching of arts
- Broad and balanced curriculum throughout
- Regular PE 2 x weekly
- Daily boost
- Mindful activities
- Well-being ambassadors and Play leaders
- Rights Respecting school
- A range of after school clubs





ENRICHMENT & TRIPS

WARNING ZONE



BEAUMANOR HALL



LINKS WITH SECONDARY SCHOOLS



HOME LEARNING

Our expectations:

- Reading and/or talking about their reading to an adult for at least 20 minutes, 5 times a week. Different year groups will have different routines regarding reading. Please look out for guidance from their year group.
- Learning spelling patterns linked to age-related expectations every week (Spelling Shed).
- Reciting multiplication tables to increase their fluency so that they can be applied in other areas of maths and problem solving (TT Rockstars).
- Teachers may also direct pupils to additional work to support their work in class if this is felt necessary.
- Complete activities from home learning log.





- ✓ Your child should read for pleasure every day , for a minimum of 20 minutes
- ✓ Encourage independence, so that your child is ready for secondary school, i.e. packing bags, packed lunches, getting clothes out etc.
- ✓ Talk to your child about what they have learned each day/week, as this will help them remember too!
- ✓ Continue to refer to the 6rs at home
- ✓ Encourage physical and mental wellbeing





LUNCHTIMES

- ✓ Meals can be purchased for children in KS2 via Beehive.
- ✓ Children may bring a healthy packed lunch if they prefer.
- ✓ If a child forgets their packed lunch, please bring to office before 10am.
- ✓ We do not allow children to bring nuts or products containing nuts to school. This includes chocolate spread. **WE ARE A NUT FREE SCHOOL.**





OTHER REMINDERS

- All children entitled to free eye tests
- Pupil premium- are you entitled?
- SATS session for parents Thursday 19th September 5-6pm
- We will run revision support session for parents in January/February-TEAMS. Please attend as these are important messages and tips.





CONTACT US

- If your child is ill, please contact school office.
- If you need to speak to your child's teacher, please arrange a meeting with them through the school office.
- If you have a concern, we ask that you always first speak to your child's teacher. We know this normally resolves the situation quickly and smoothly.

